



**pve**<sup>®</sup>  
pneumatic  
vacuum elevators

TYPES OF INSTALLATION



# Types of Installation

The elevator installation is conditioned by two variables:

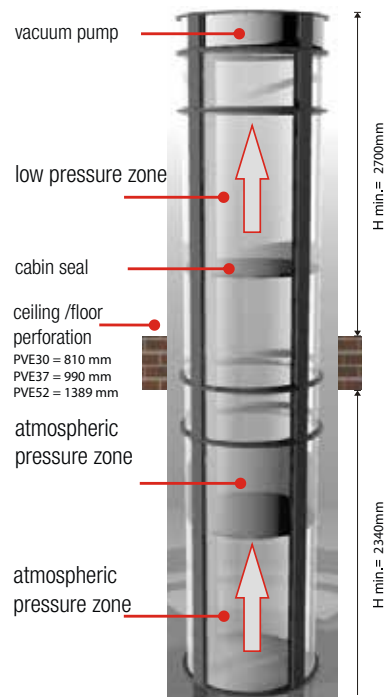
### 1. Minimum level of disparity

- Split unit \* Minimum level of disparity 2450mm
- Head unit \* Minimum level of disparity 2700mm

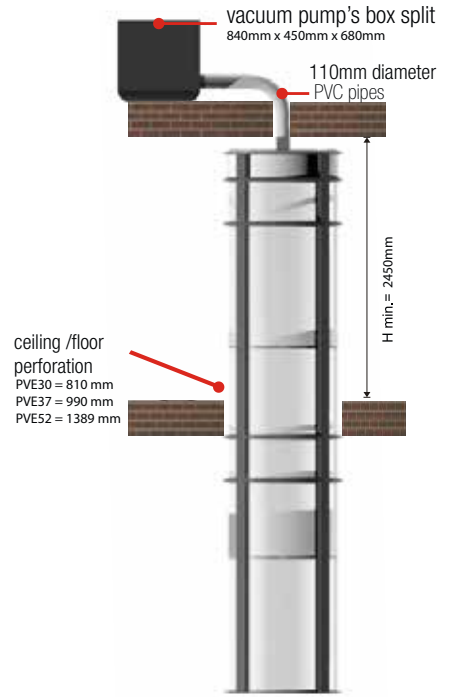
### 2. Landing accommodations

- Balcony: Balcony band for additional stability/safety
- Through floors: Required finished through-floor penetration(s)

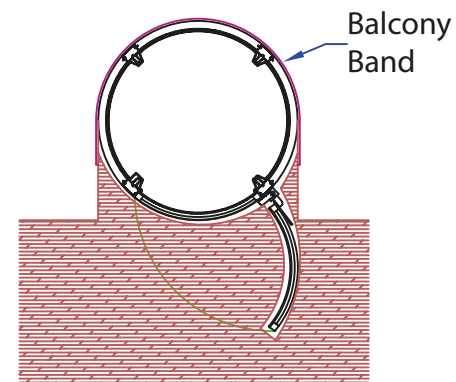
#### Head Unit - Standard



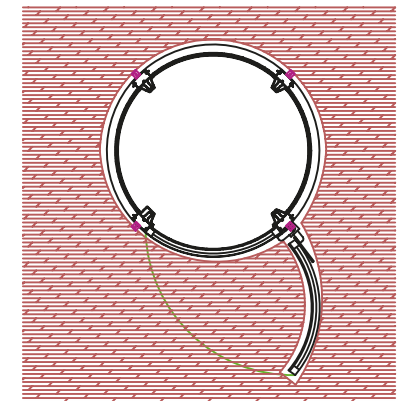
#### Split Unit



#### Balcony



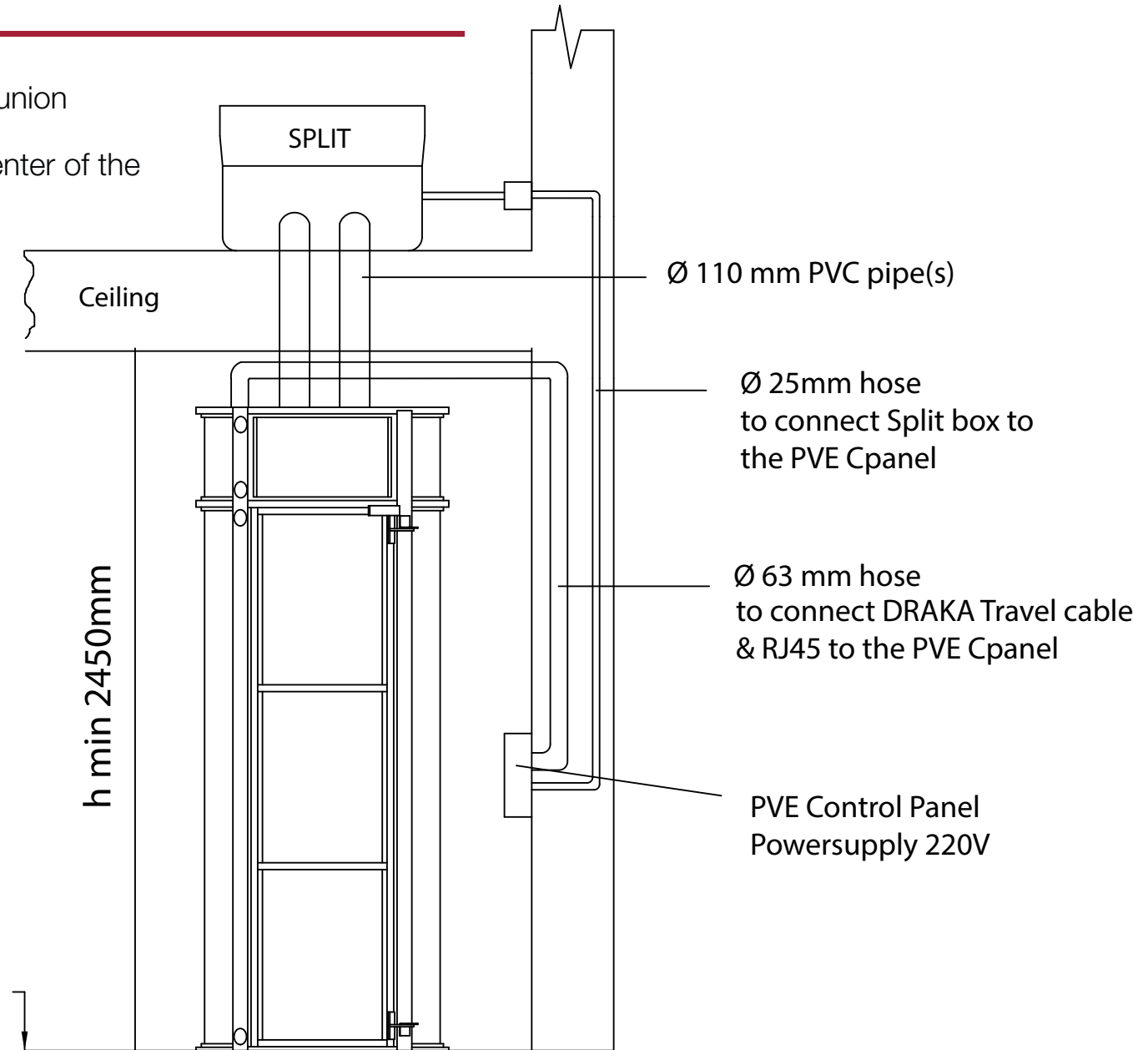
#### Through Floors



# 1. Disparity lower to 2550mm

Model A) Perforation of ceiling. Direct union

Make a hole in ceiling directly in the center of the elevator. Minimum level of disparity is 2450mm.



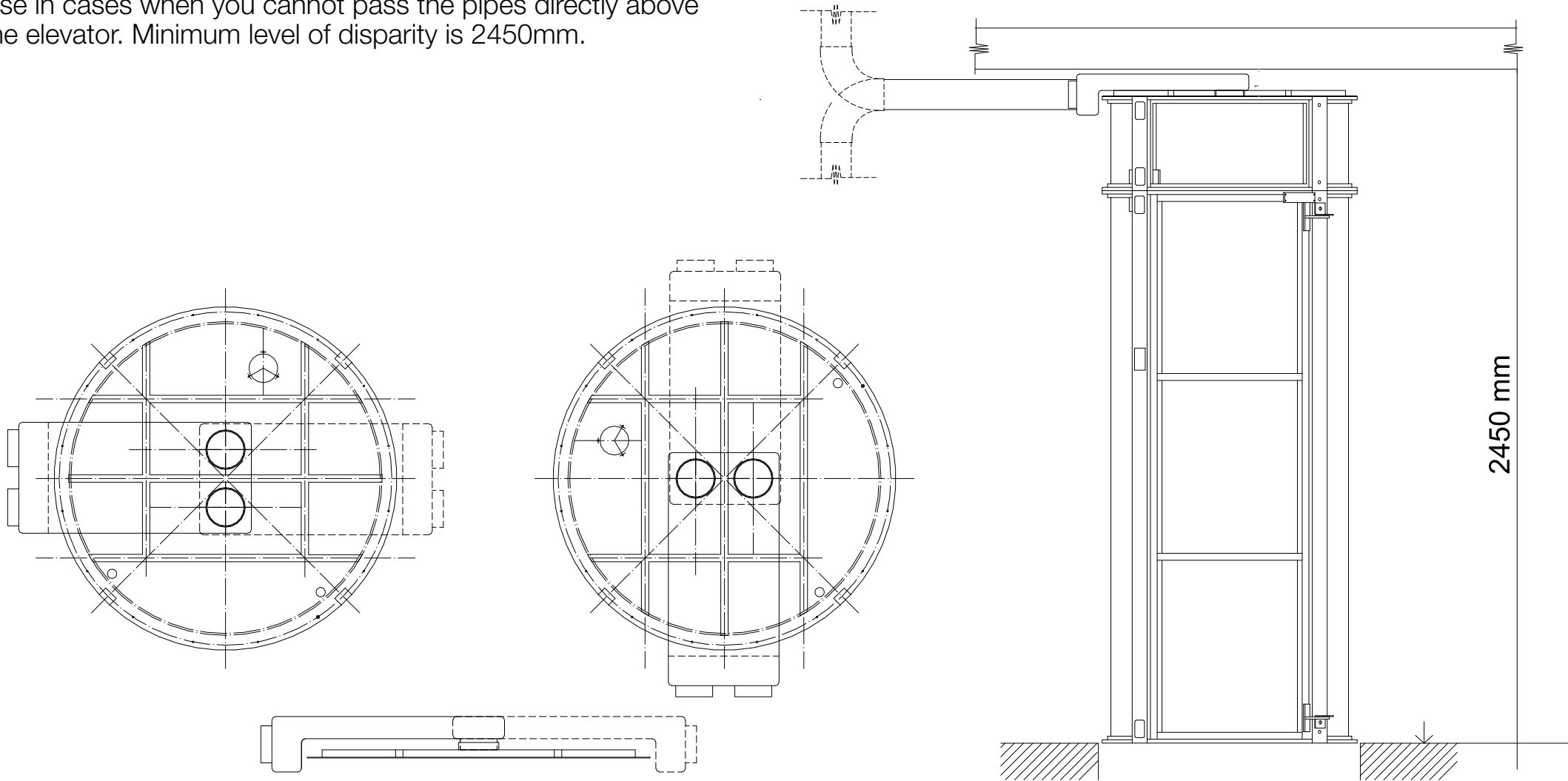
For PVE30 model = (1) Ø 110mm PVC pipe  
 For PVE37 model = (2) Ø 110mm PVC pipes  
 For PVE52 model = (2) Ø 110mm PVC pipes

\* Applies to any type of Split unit installation.

# 1. Disparity lower to 2550mm

Model B) Split Unit Side Adaptor

Use in cases when you cannot pass the pipes directly above the elevator. Minimum level of disparity is 2450mm.



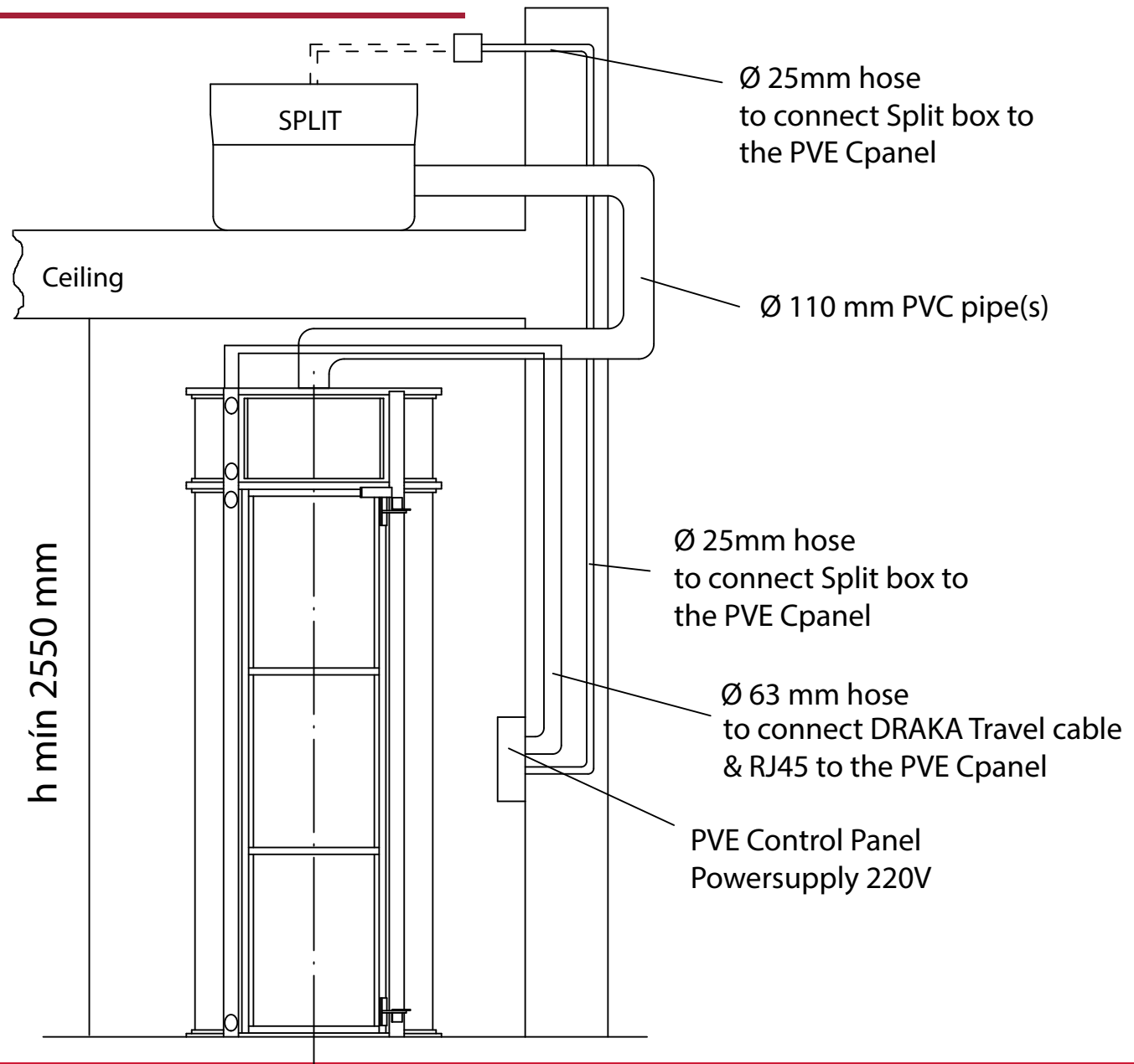
## 2. Disparity lower to 2700mm

Model C)

Use in cases when you cannot pass the pipes directly above the elevator.

This avoids having to put a hole in the roof by installing it against a wall outside.

Minimum level of disparity 2550mm.

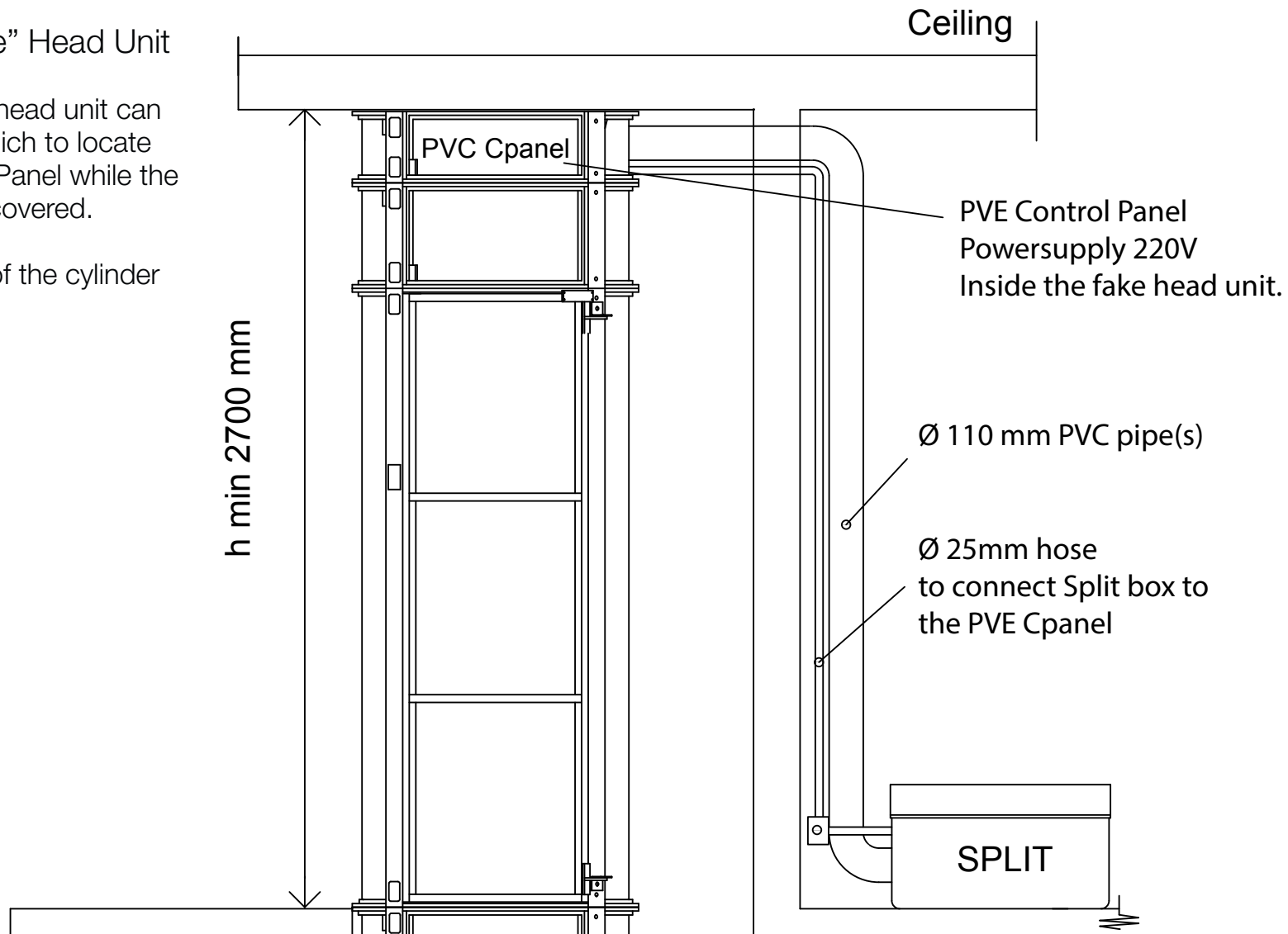


### 3. Disparity equal to or greater than 2700mm

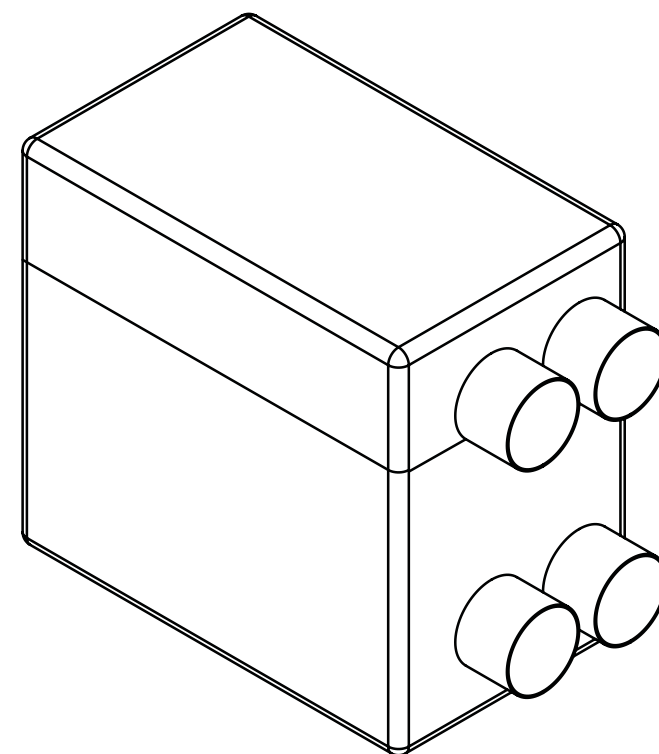
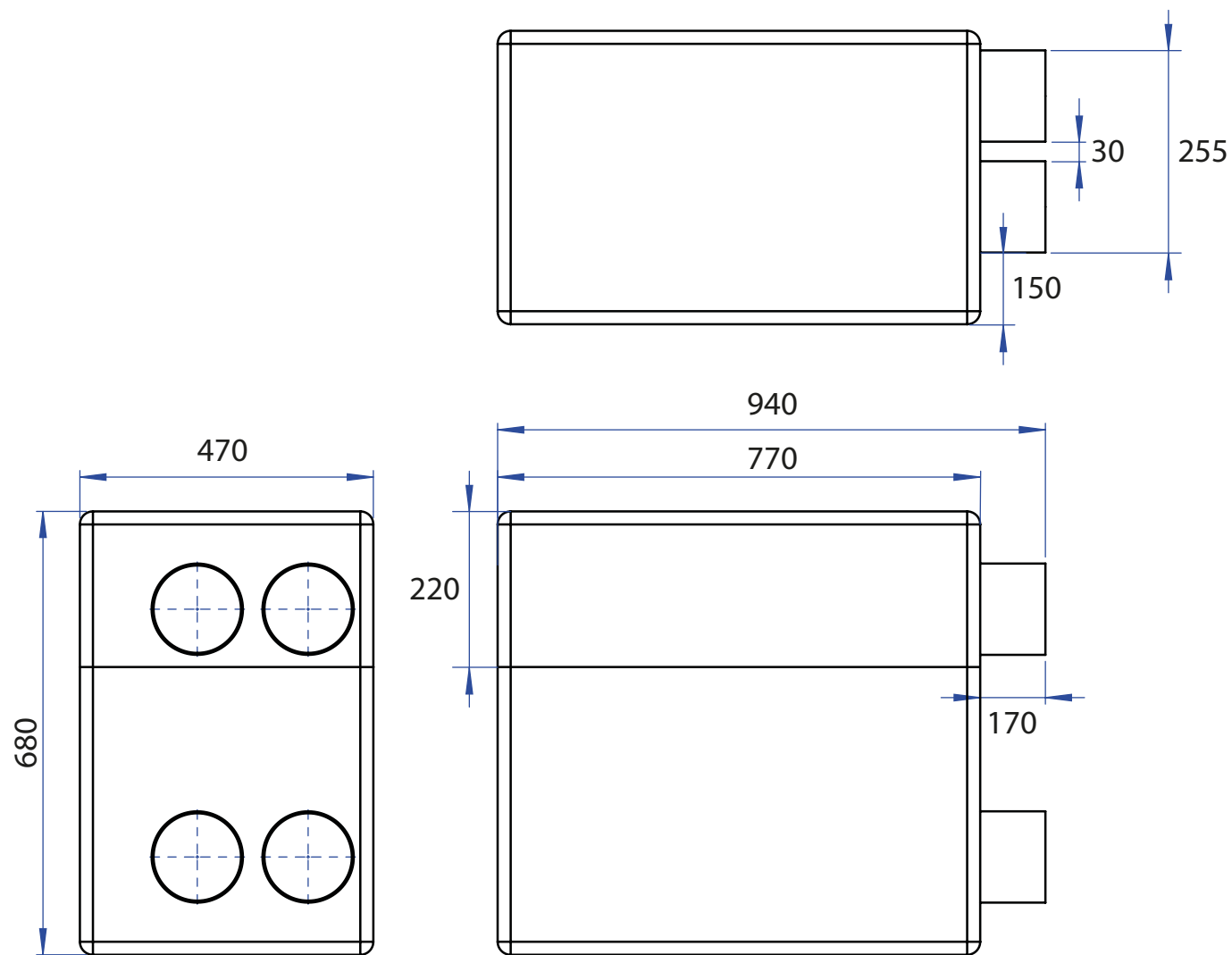
#### Model D) "Fake" Head Unit

A "fake" (empty) head unit can be installed in which to locate the PVE Control Panel while the PVC pipe(s) are covered.

The total height of the cylinder is 2700mm.

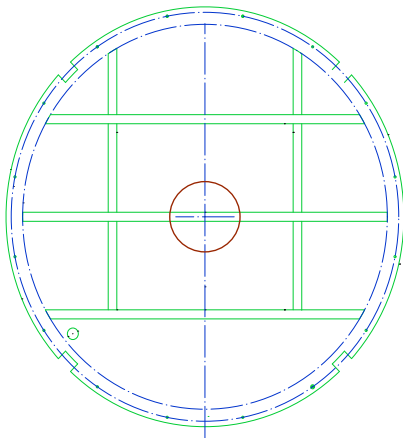


# 4. Split Unit Drawings

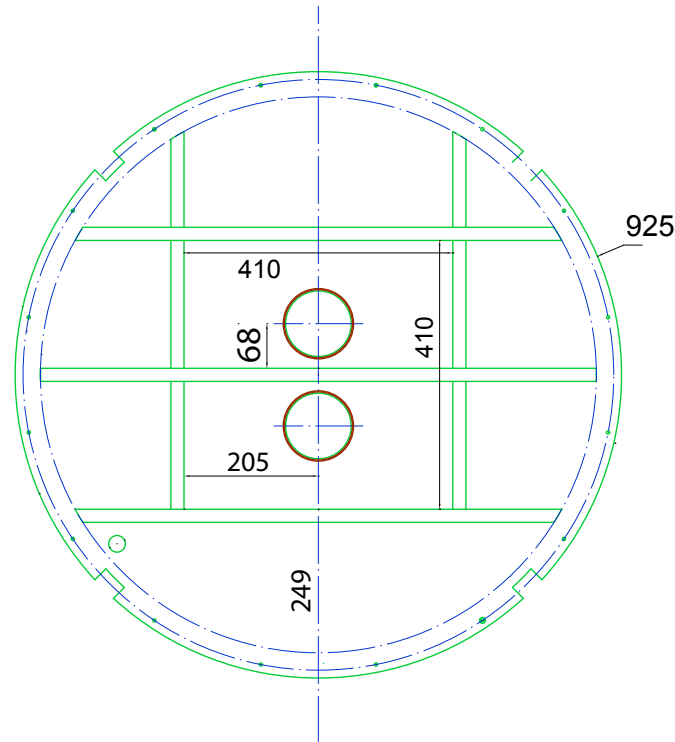


# 5. Split Cover - PVC pipe's holes position

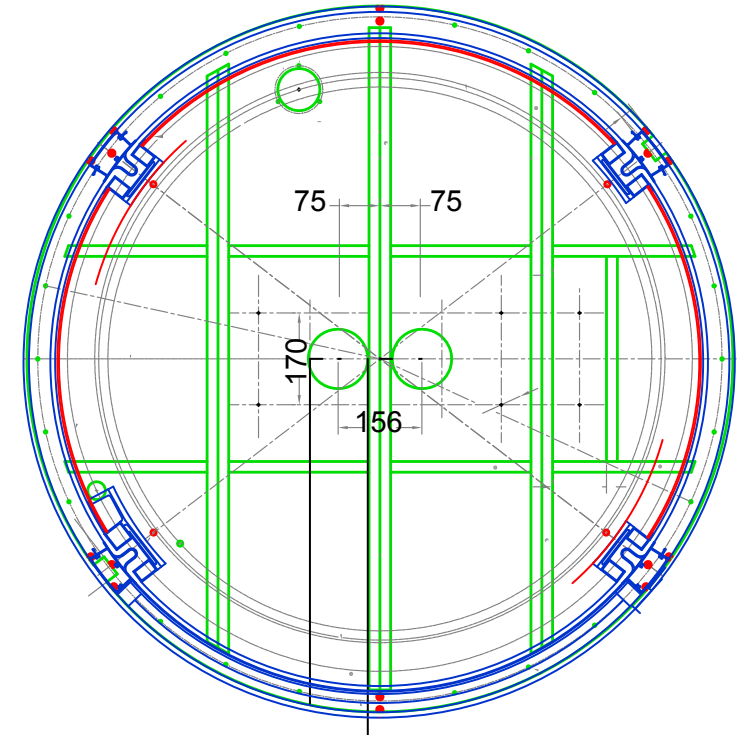
**PVE30**



**PVE37**



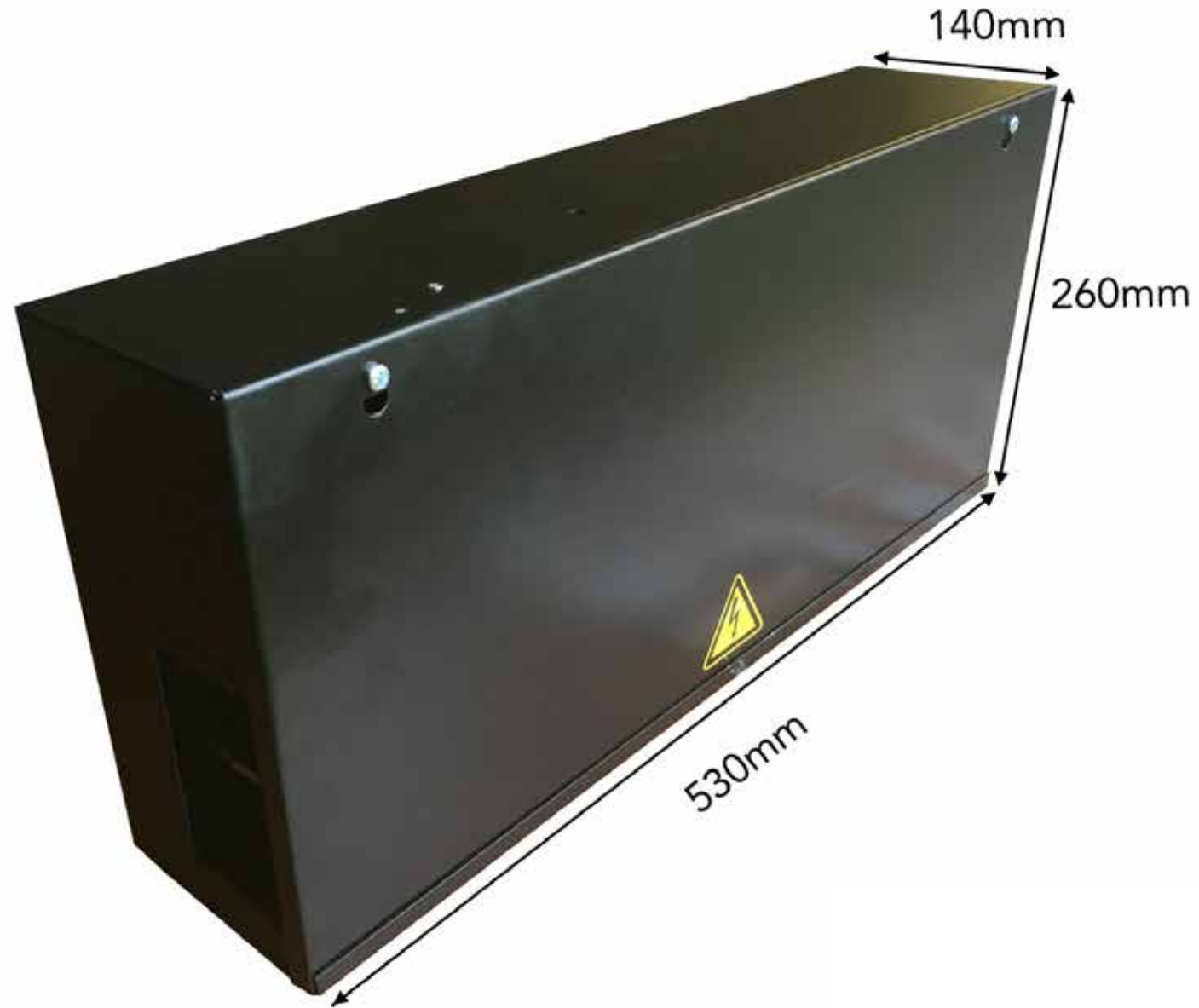
**PVE52**



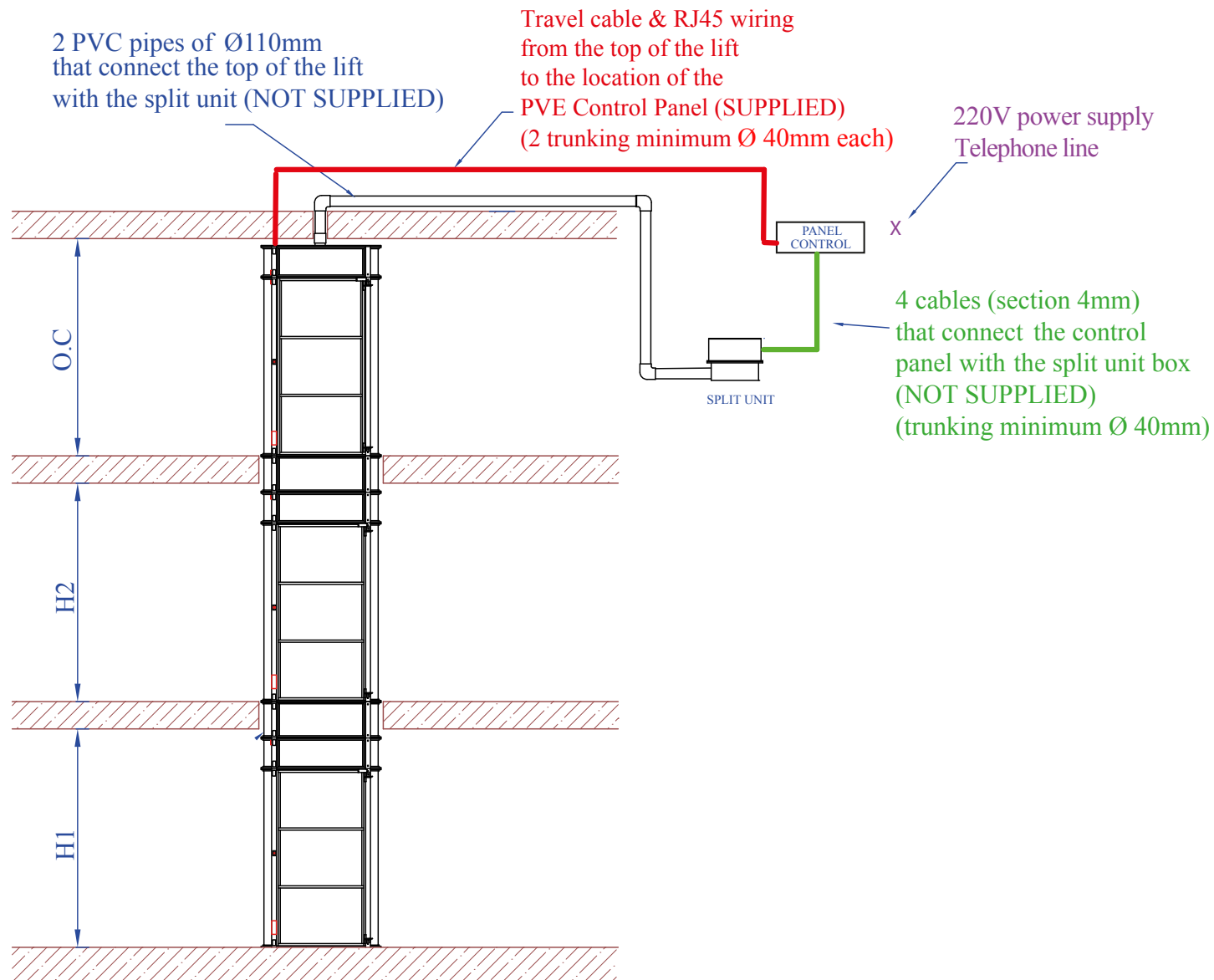
DOOR POSITION



## 6. PVE Control Panel



# 7. Typical Installation Split Unit



# 8. Disparity equal to or greater than 2700mm

Model E)

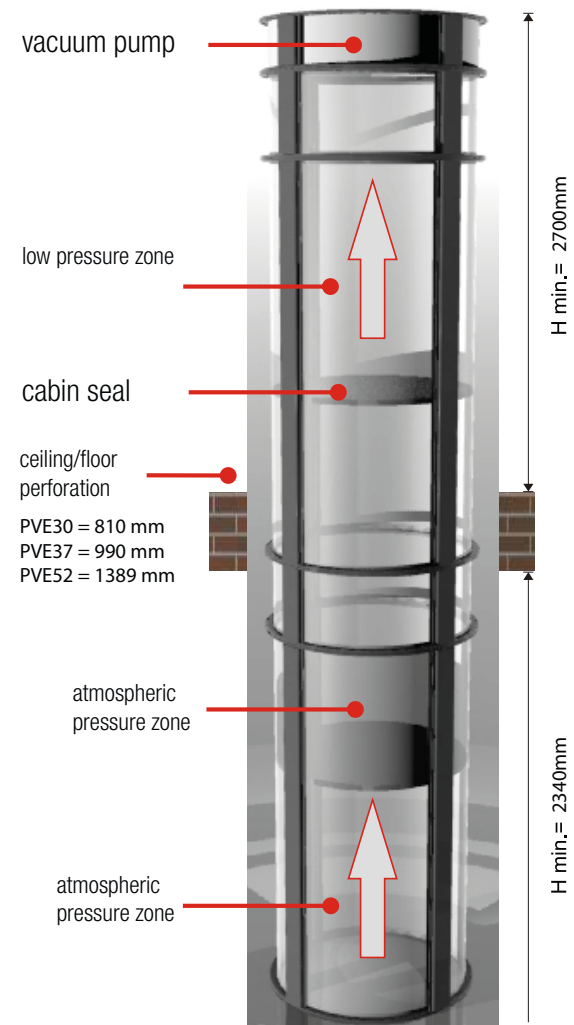
## ***Head Unit - Standard***

In the head unit configuration, the vacuum system is located directly on top of the upper floor vertical cylinder of the pneumatic vacuum elevator.

The electrical control panel is inside, and the only installation requirements are to connect to a 220v outlet near the machinery.

This format is best in homes that have sufficient height on the top floor.

(Minimum height for installation 2700mm)





BALCONY  
INSTALLATION

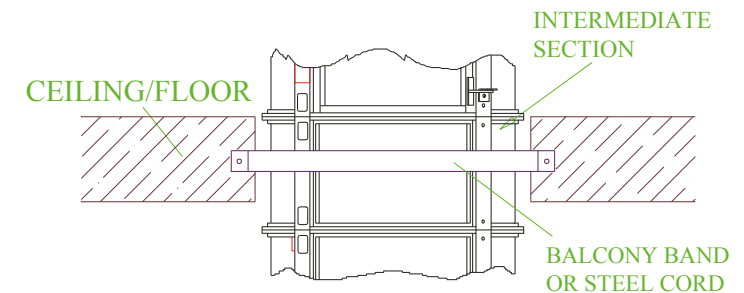




## 9. BALCONY INSTALLATION

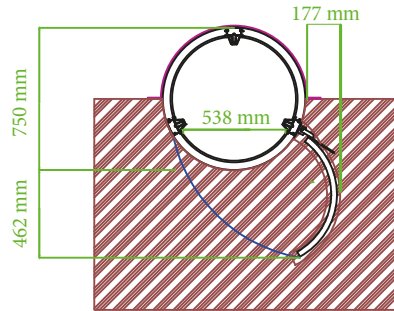
The Vacuum Elevator can be balcony mounted and utilizes a balcony band (steel cord) and small platform landing to stabilize the lift.

The balcony mount is characterized by being a very simple and quick installation due to the lack of construction required to accommodate the elevator. Balcony mount installations are most commonly installed in the center of a staircase or open foyer where there is clear space both upstairs and downstairs.

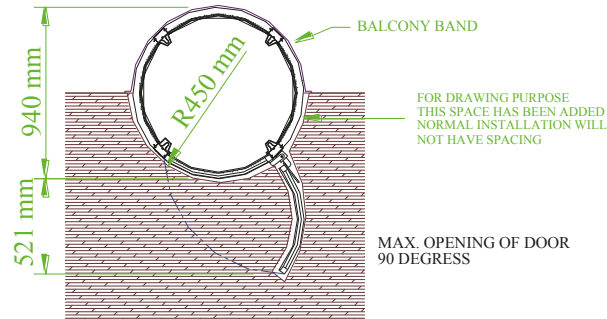


# TYPICAL BALCONY MOUNT

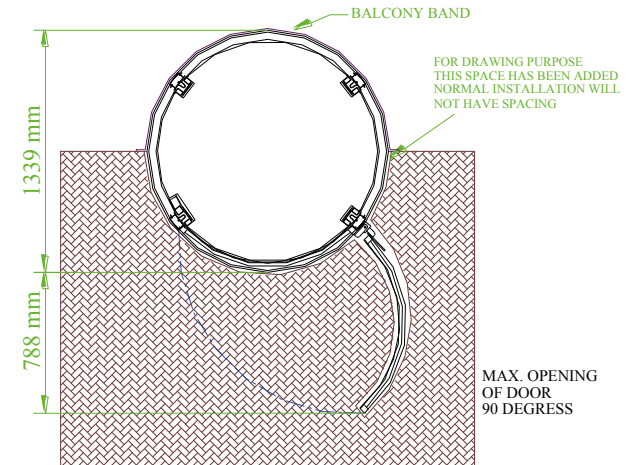
Mount sample 1 (scale 2:1)



**PVE30**

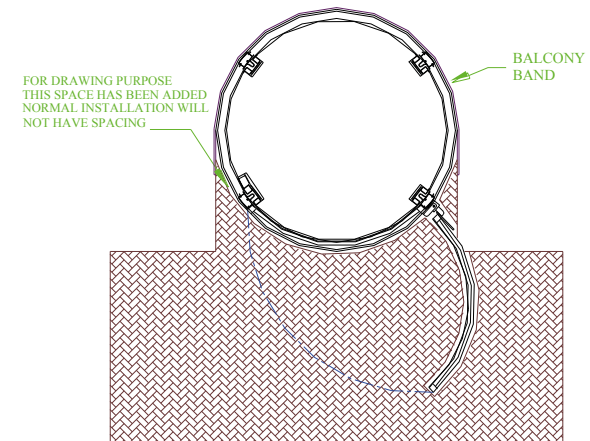
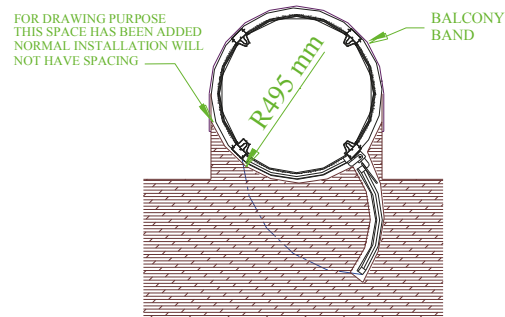
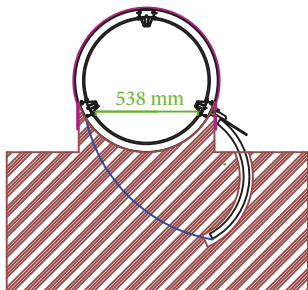


**PVE37**



**PVE52**

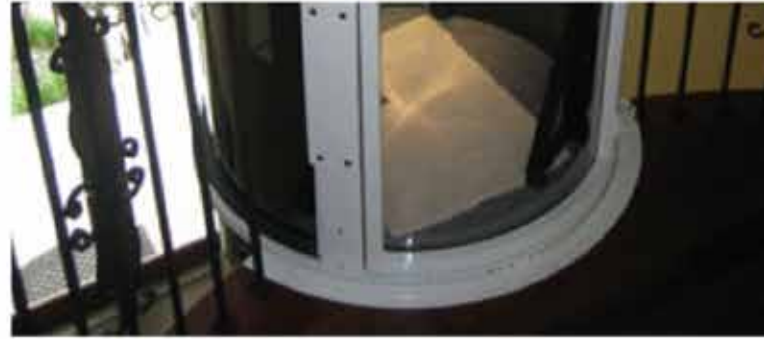
Mount sample 1 (scale 2:1)



Technical data subject to change. PVE reserves the right to change the information in this document without prior notice. Information contained herein is the property of Pneumatic Vacuum Elevators Llc. No reproduction or disclosure of this information may be made by the recipient to any person or organization without the written consent of Pneumatic Vacuum Elevators Llc.



**MOUNT  
SAMPLE 1**



**MOUNT  
SAMPLE 1**





**MOUNT  
SAMPLE 1**



**MOUNT  
SAMPLE 2**



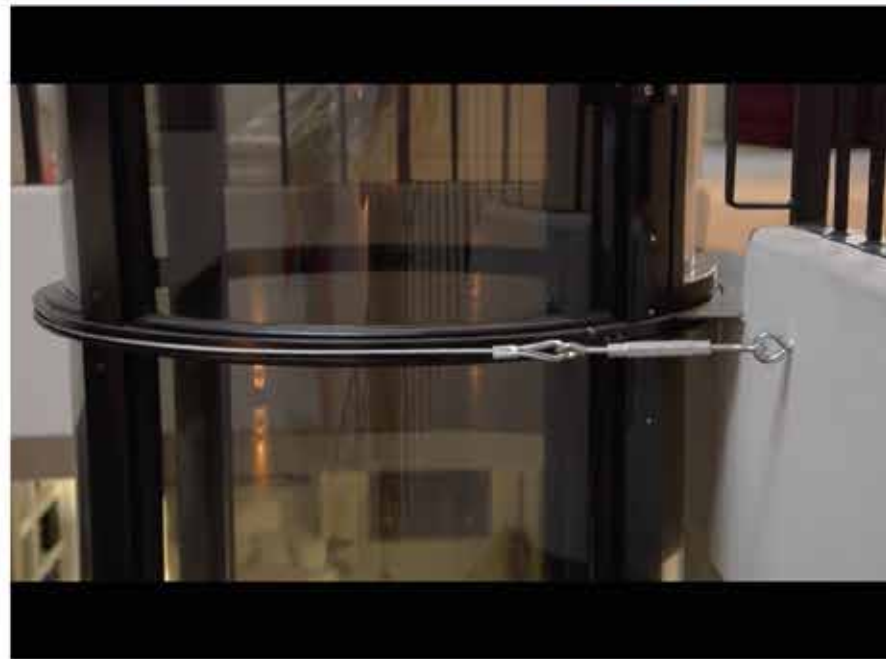
**MOUNT  
SAMPLE 2**



**BALCONY BAND**



**STEEL CORD (RECOMMENDED)**



**FIXATIONS**



THROUGH-FLOOR  
INSTALLATION



**pve**<sup>®</sup>  
pneumatic  
vacuum elevators



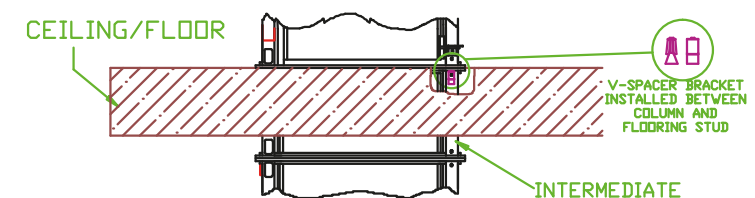
## 10. THROUGH FLOOR INSTALLATION

For through-floor applications, the through-floor hole must be 50mm greater than the diameter of the elevator (I.E. For a PVE37, the hole must be 990 mm in diameter) and we recommend that the hole be finished (I.E. Painted) as Vacuum Elevators provide 360° visibility for all inside.

*Floor/Ceiling\* finishing rings* are provided above and below the elevator to provide a clean, crisp appearance.

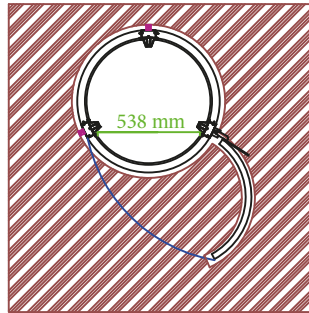
\* Floor finishing rings are required in middle floors and the top floor.

\* Ceiling finishing rings are required in middle floors and the lowest floor.



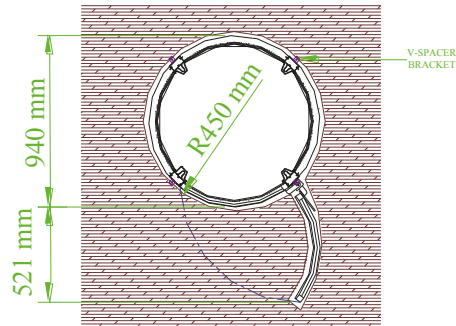
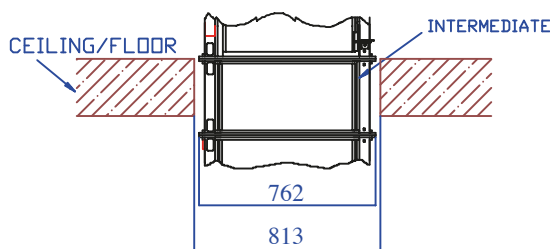
# TYPICAL THROUGH-FLOOR MOUNT

Typical of through-floor hole (scale 2:1)



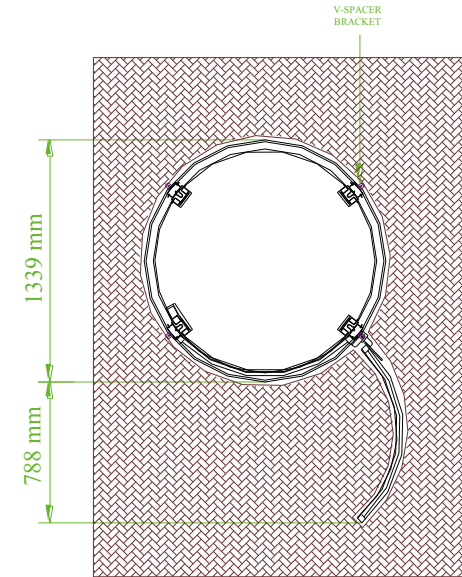
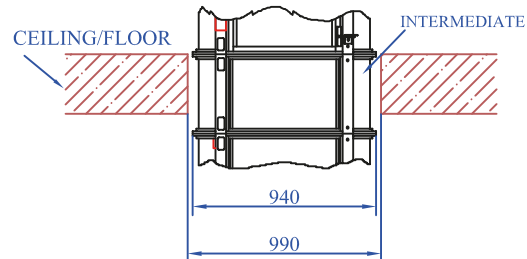
## PVE30

Recommended Through-floor hole diameter: 800mm



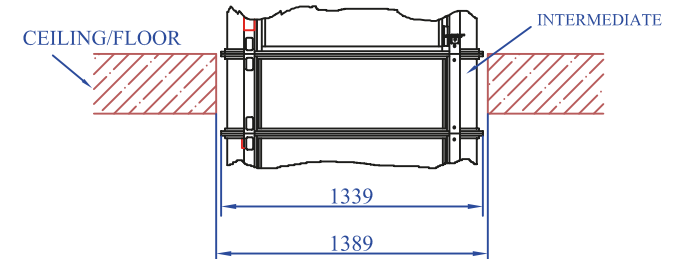
## PVE37

Recommended Through-floor hole diameter: 1000mm



## PVE52

Recommended Through-floor hole diameter: 1400mm



Technical data subject to change. PVE reserves the right to change the information in this document without prior notice. Information contained herein is the property of Pneumatic Vacuum Elevators Llc. No reproduction or disclosure of this information may be made by the recipient to any person or organization without the written consent of Pneumatic Vacuum Elevators Llc.



**FLOOR  
FINISHING  
RINGS**





**CEILING  
FINISHING  
RINGS**



**pve**<sup>®</sup>  
**pneumatic**  
*vacuum elevators*

Pneumatic Vacuum Elevators  
C/ Primavera 19, 28850  
Torrejón de Ardoz  
Madrid, SPAIN  
Tel: (+34) 918 867 539  
info@vacumelevators.eu  
www.vacumelevators.eu